

# Root Tips

Michael P. Dyriw, D.D.S., M.S.



## Angles Matter

One thing I've come to realize is that angles can make a big difference in our interpretation of x-rays. Take for example Prince William flipping the middle finger... or is he? As you can tell, when viewed from another angle, that is not the case. You need angles to get the full story.

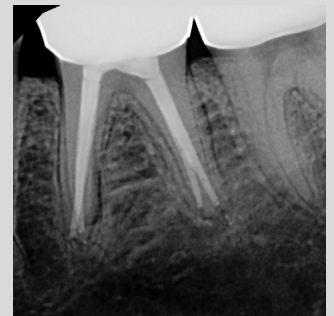


We have to understand that our radiographs are a 2-D representation of a 3-D object. We can get a better idea of what we are interpreting by using techniques such as the SLOB rule (same lingual, opposite buccal). Taking an angled radiograph helps us better understand the situation.



PreOp radiograph

You can see in the PreOp image that there is a PARL on the distal root. A mesial angle shows us that in fact there is a missed canal! Using the SLOB rule, the untreated canal moved towards the mesial when we shifted the cone towards the mesial (same), so we know it is an untreated lingual canal. This comes in handy when a CBCT isn't present.



ReTx final radiograph with 4 completed canals



PreOp shift radiograph reveals an additional distal root with a missed canal



This application can help to locate additional canals or roots, distinguish between objects that have been superimposed, and to distinguish between various types of resorption or fractures.

