

Root Tips

Michael P. Dyriw, D.D.S., M.S.

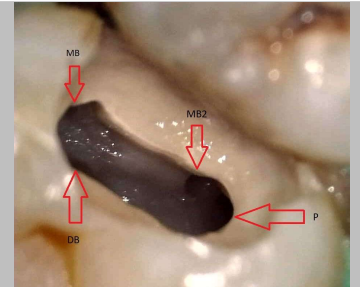
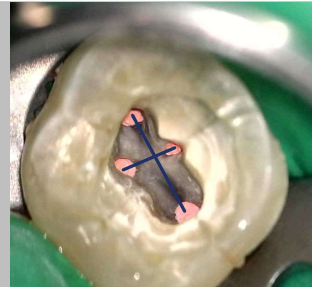


MB2, MB2,
Where are you?
There you are. There you are.
I found you.

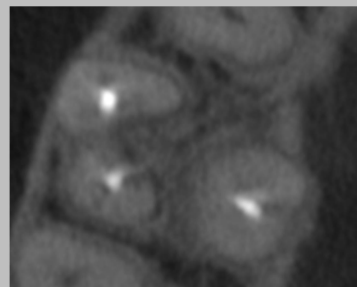
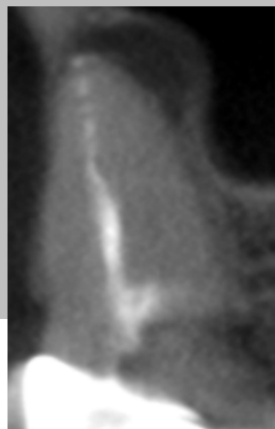
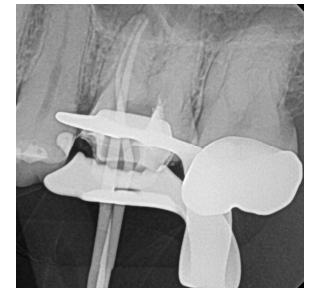
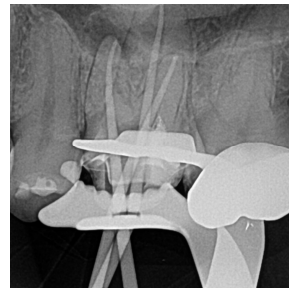
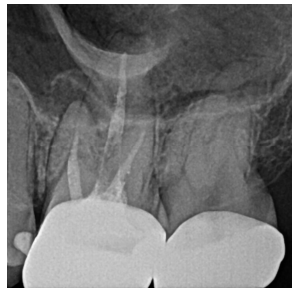


The MB2 canal can be found in more than 90% of maxillary first molars and 60% in maxillary second molars.^{1,2} I do a lot of retreatreating upper molars and it is generally because of a missed MB2 canal. In maxillary first molars, the MB2 canal merges with MB1 about 45% of the time.² I have spent a lot of time looking for the MB2 canal because I know it's probably there!

The MB2 canal orifice is located palatal and mesial to the MB1. If you connect the MB and P canals, MB2 can generally be found on a line perpendicular to this at the level of the DB canal. Keep in mind, this is not always the case.



When a canal is off center in a root, you can almost always assume there is an additional canal. This can easily be seen in the axial and coronal planes. Sometime when I take a cone fit image and notice the cone is off center, there is very likely an MB2.



Negotiation of the MB2 canal can be tricky; a ledge of dentin covers its orifice, the orifice has a mesiobuccal inclination on the pulp floor, and the canal's pathway often takes one or two abrupt curves in the coronal part of the root.



¹Kulild JC, Peters DD: Incidence and configuration of canal systems in the mesiobuccal root of maxillary first and second molars. *J Endod* 16(7):311, 1990.

²Stropko JJ: Canal morphology of maxillary molars: clinical observations of canal configurations. *J Endod* 25:446, 1990.